

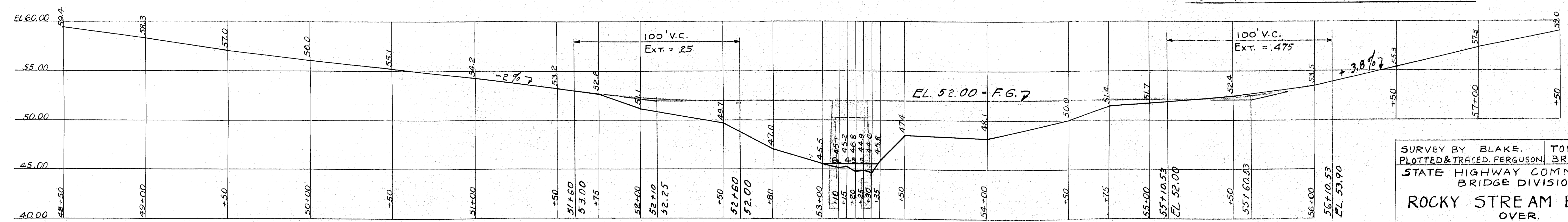
CURVE DATA.

$\Delta = 31^{\circ}-21' L.$

$D = 4^{\circ}-30'$

$T = 357.29'$

$L = 696.66'$



PROFILE ALONG SURVEY LINE.

SCALES:- HORIZ - 1" = 30 FEET.

VERT. - 1" = 5 FEET.

SURVEY BY BLAKE. TOWN 15-16

PLOTTED & TRACED. FERGUSON. BRIDGE 3620

STATE HIGHWAY COMMISSION.

BRIDGE DIVISION.

ROCKY STREAM BRIDGE.

OVER.

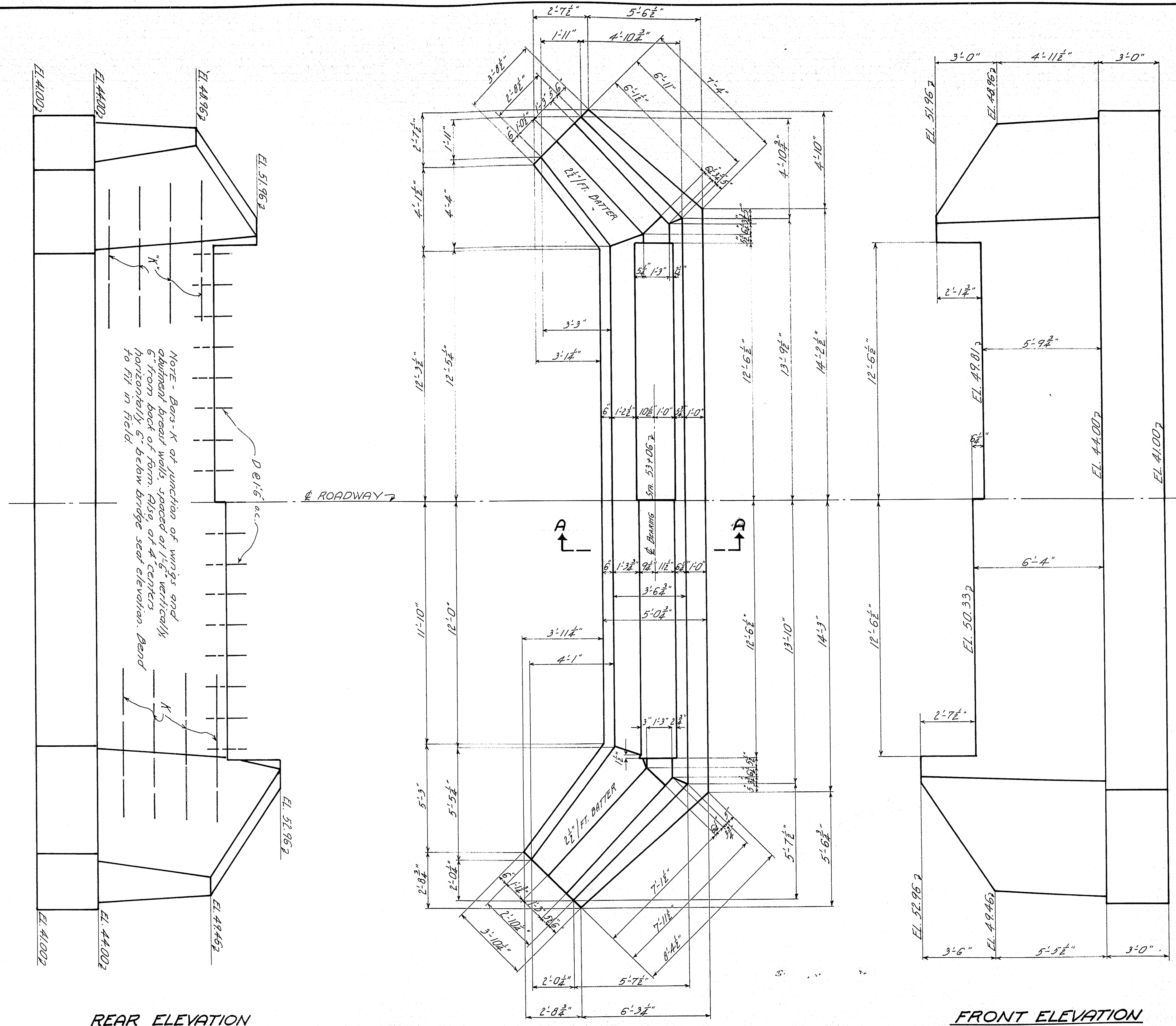
ROCKY BROOK.

IN THE TOWN OF

CRAWFORD. WASHINGTON CO.

SURVEY PLAN.

SHEET 1 of 3. AUGUSTA, MAINE. SEPT. 1938.



REAR ELEVATION

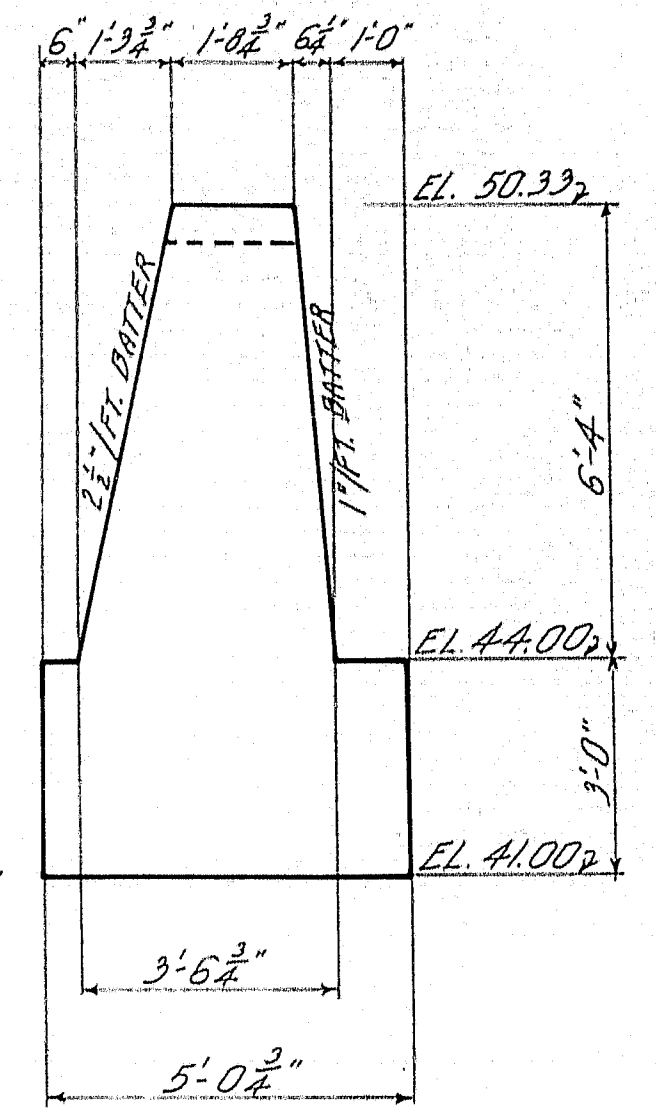
PLAN
ABUTMENT #1

ABUTMENT #2 SIMILAR TO ABUTMENT #1. DETAILS ARE OPPOSITE HAND TO DETAILS SHOWN FOR ABUTMENT #1. BRIDGE IS SYMMETRICAL ABOUT TRANSVERSE C.

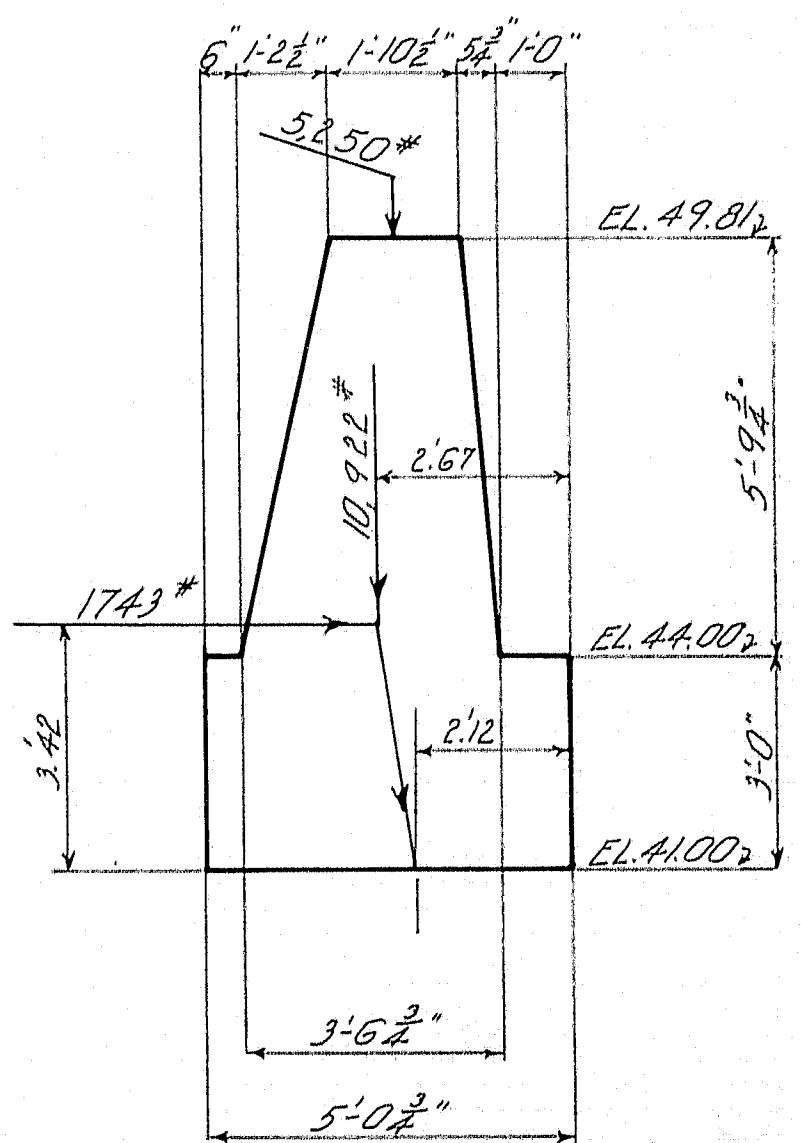
FRONT ELEVATION

NOTE - Cover the $\frac{1}{4}$ " slot between the curb and the wings on the backside with 2 layers of heavy roofing 10" wide. Coat surface of concrete and backside of each layer as applied with hot tar or asphalt. Recess area to be covered $\frac{1}{4}$ " by nailing thin strips to the forms. Cover the joint between the slab and abutment in the same manner.

NOTE - Cover the bridge seat on each abutment with one layer of heavy roofing to break bond with slab. Wrap ends of dowels D, in slab, with one layer of heavy roofing.

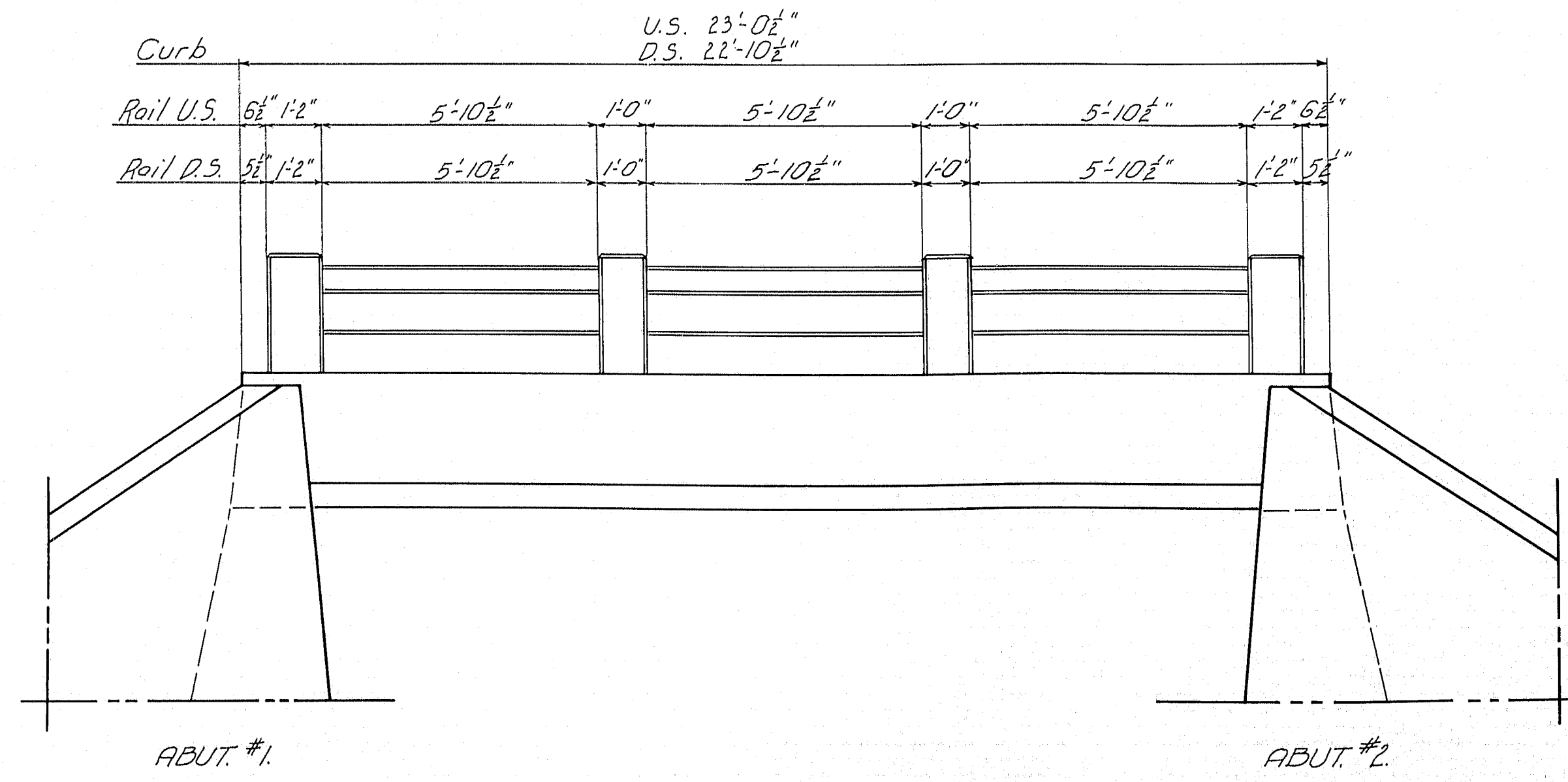
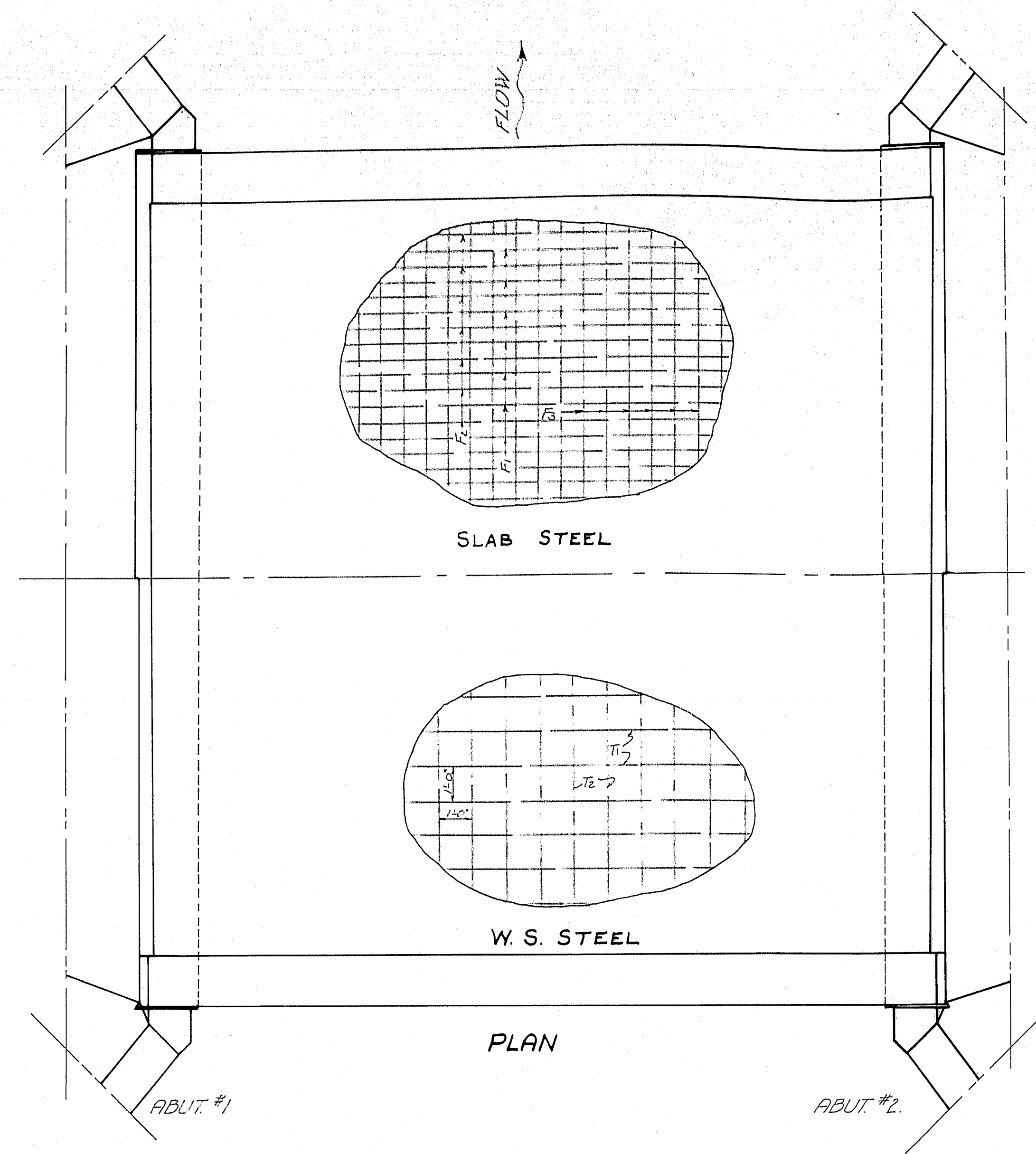


SECTION A-A

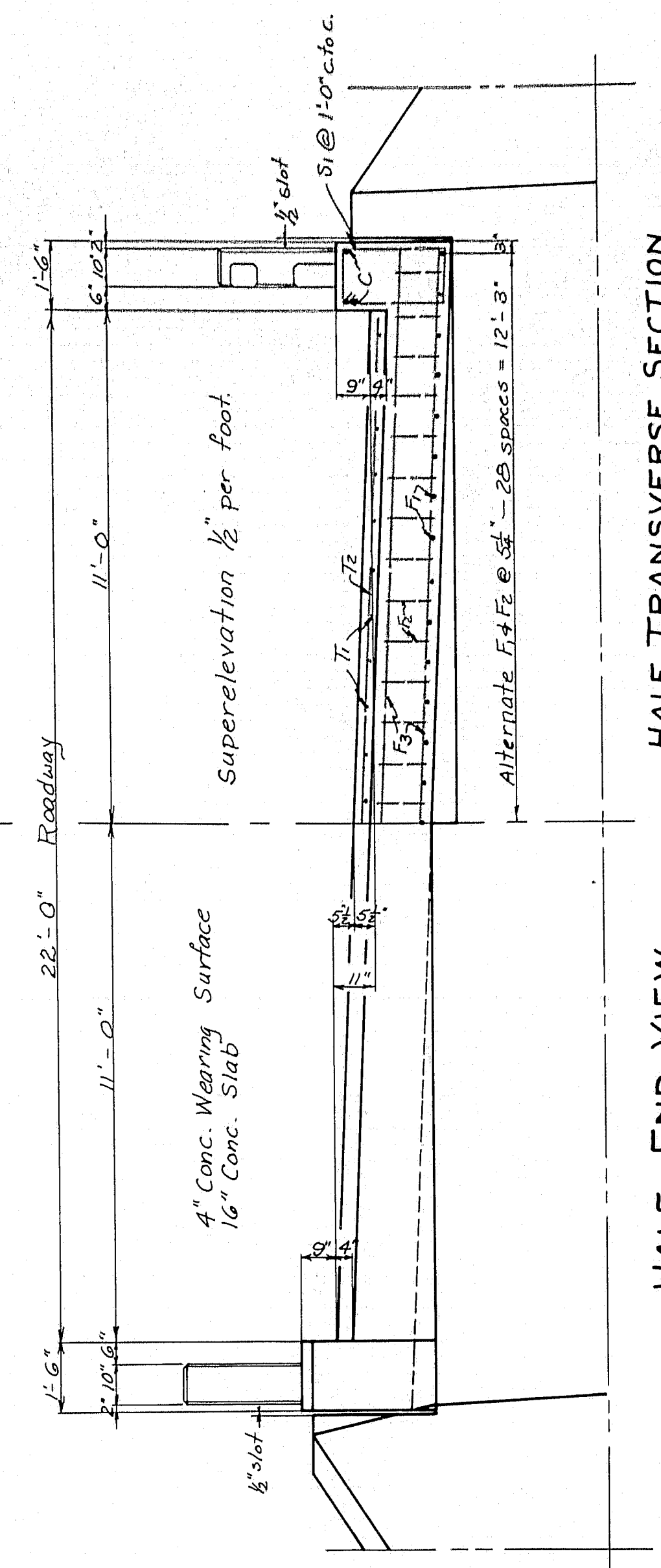


ABUT. ANALYSIS

PLAN-PC CHECKED- <i>WLB</i>	TRACED - <i>Hamlin</i>	TOWN BRIDGE	15-16 3620
STATE HIGHWAY COMMISSION BRIDGE DIVISION			
ROCKY STREAM BRIDGE			
OVER			
ROCKY BROOK			
IN THE TOWN OF			
CRAWFORD-WASHINGTON CO.			
SUBSTRUCTURE			
Sheet 2 of 3, Augusta, Me. Oct. 1938.			

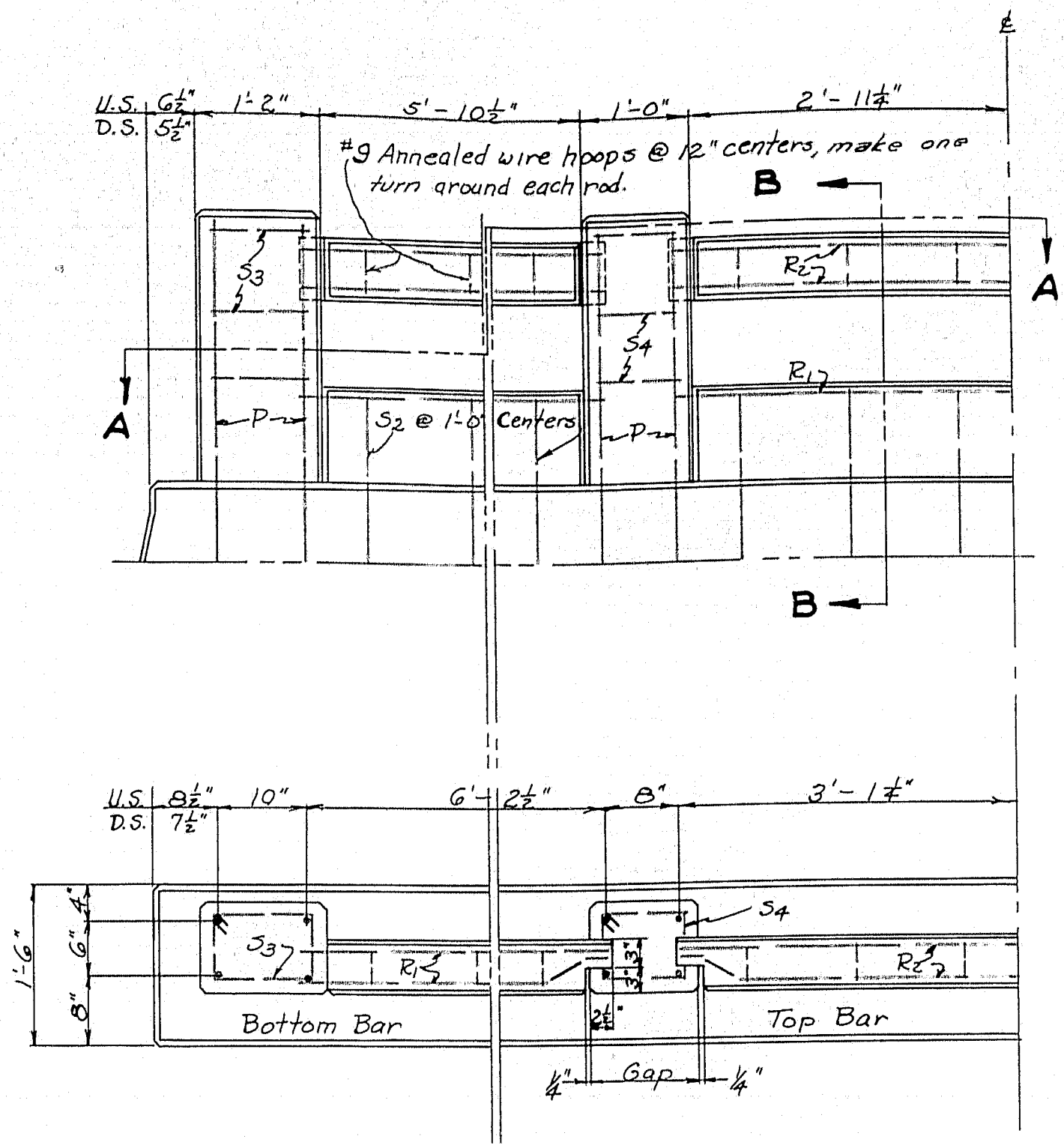


U.S. VIEW



HALF END VIEW

HALF TRANSVERSE SECTION



SECTION A-A

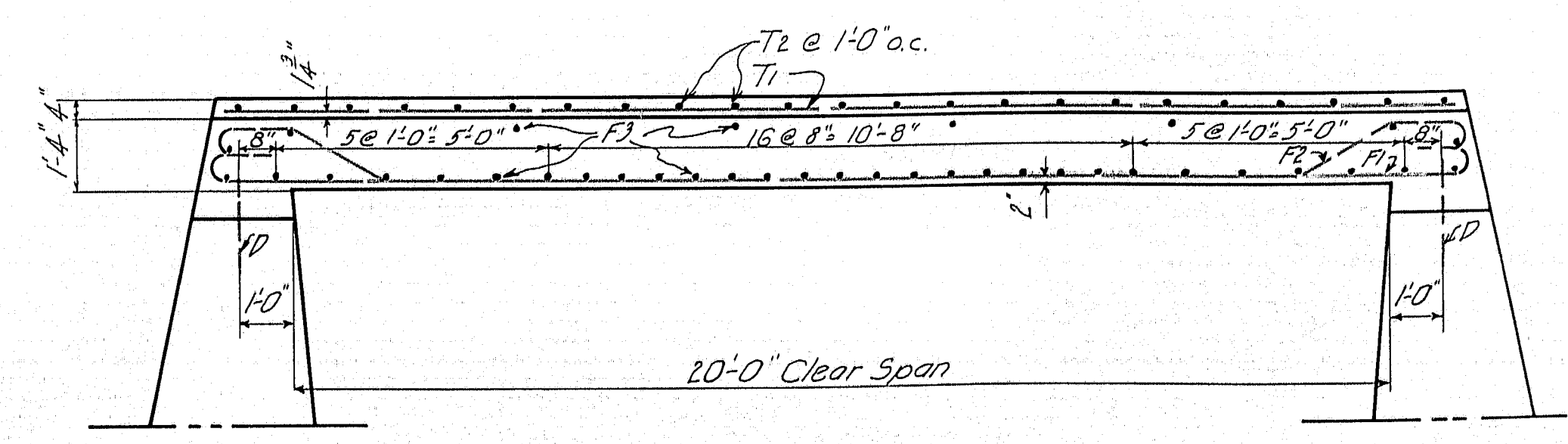
SECTION B-B

NOTE: Curb to be cast with slab. Steel for posts and lower bar to be in position before curb is placed. The lower bar is to be cast in place. The longitudinal steel in the bar to project 3" into each post. The top bar to be precast and set in position so that the ends project into post forms 2". Wrap the tongue end with 2 layers of heavy roofing felt. Build post forms and cast posts. All exposed edges of concrete to be chamfered 1/2" unless otherwise noted.

RAIL DETAILS

STEEL SCHEDULE			
BAR SIZE	No.	LENGTH	REMARKS
S1 1/2"	46	7'-11"	Curb Bent
S2 1/2"	36	5'-11"	Bottom bar - Rail
S3 1/2"	12	3'-7"	Rail Post End
S4 1/2"	12	3'-3"	Rail Post Int.
P 3/4"	32	5'-2 1/2"	Rail Post
F1 1"	29	25'-0"	Slab
F2 1"	28	25'-2 1/2"	Slab
T1 3/8"	22	22'-6"	Wear Surface Straight
T2 3/8"	23	21'-8"	"
C 1/2"	6	22'-6"	Curb
B1 1/2"	12	6'-4 1/2"	Bot. bar - Rail
B2 1/2"	24	6'-2 1/2"	Top bar - Rail
F3 3/4"	37	24'-8"	Slab
K 3/4"	32	8'-0"	Abutments
D 3/4"	34	2'-0"	Bn. Seat Dowels

All steel to be plain bars of structural grade. All dimensions are to center of bars.



LONGITUDINAL SECTION

PLAN-PC, TRACED-PC AND REINFORCED TOWN 15-16
 CHECKED- JMB BRIDGE 3620
 STATE HIGHWAY COMMISSION
 BRIDGE DIVISION
ROCKY STREAM BRIDGE
 OVER
ROCKY BROOK
 IN THE TOWN OF
CRAWFORD-WASHINGTON CO.
 SUPERSTRUCTURE
 Sheet 3 of 3, Augusta, Me. Oct, 1938.